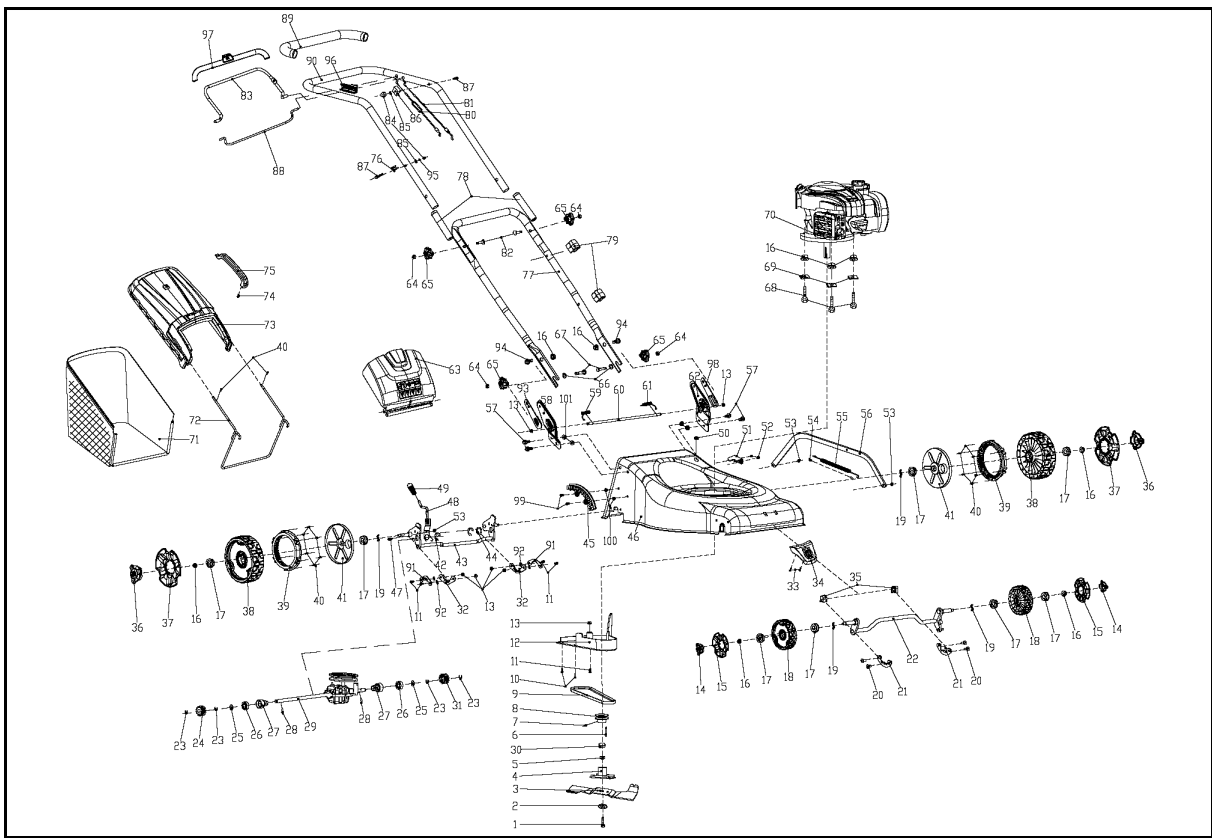




SPARE PARTS LIST

LAWN MOWERS: CONSUMER
WALK-BEHINDS

LC140 S, 967320101, 2016-01



PRODUCT COMPLETE

LC140 S, 967320101, 2016-01

Ref	Part No	Description	Remark	QTY KIT
1	587 91 38-01	LOCKING BOLT		1
2	587 91 07-01	WASHER		1
3	587 38 63-10	MOWER BLADE		1
4	587 91 12-01	BLADE SUPPORT		1
5	587 91 54-01	BUSH		1
6	587 91 53-01	FLAT PIN		1
7	587 91 28-01	SCREW		1
8	587 91 20-01	PULLEY		1
9	587 90 96-01	BELT		1
10	587 91 22-01	SCREW		2
11	587 91 26-01	SCREW		5
12	587 90 98-01	COVER		1
13	587 91 34-01	LOCK NUT		7
14	587 58 50-01	WHEEL COVER		2
15	587 58 52-01	WHEEL COVER		2
16	587 91 35-01	LOCKING BOLT		7
17	587 91 29-01	BEARING		8
18	587 58 54-01	WHEEL		2
19	587 91 46-01	WASHER		4
20	587 91 25-01	SCREW		4
21	587 91 10-01	FIXING PLATE		2
22	587 91 15-01	AXLE		1
23	587914701	TBD		4
24	587 91 57-01	GEAR ASSY		1
25	587 91 45-01	WASHER		2
26	587 91 30-01	BEARING		2
27	587 91 55-01	BEARING HOUSING		2
28	587 91 52-01	PIN		2
29	587 90 87-01	GEARBOX ASSY		1
30	587 91 02-01	BUSHING		1
31	587915601	TBD		1
32	587 91 09-01	FIXING PLATE		2
33	587 91 24-01	SCREW		2
34	587 58 49-01	FRONT COVER		1
35	587 90 97-01	LOCKING RING		2
36	587 58 51-01	WHEEL COVER		2
37	587 58 53-01	WHEEL COVER		2
38	587 58 55-01	WHEEL		2
39	587 91 01-01	GEAR WHEEL		2
40	587 91 21-01	SCREW		14
41	587 58 62-01	COVER		2
42	587 91 48-01	WASHER		2
43	587 91 16-01	AXLE		1
44	587 91 08-01	WASHER		1
45	587 90 99-01	SEGMENT		1
46	587 90 88-01	PLATE		1
47	587 91 27-01	WASHER		1
48	502 23 05-01	HANDLE ASSY		1
49	587 58 57-01	KNOB		1
50	587 91 00-01	COVER		1
51	587 91 13-01	GUIDE PLATE		1
52	587 91 41-01	BOLT		2
53	587 91 31-01	LOCKING BOLT		3
54	587 91 58-01	TUBING		2
55	587 91 49-01	SPRING		1
56	502 23 06-01	CONNECTING ROD		1
57	587 91 39-01	BOLT		4
58	501 05 44-01	BRACKET		1
59	587 91 51-01	SPRING		1
60	502 23 10-01	ROD		1
61	587 91 50-01	BRACKET		1
62	501 05 47-01	BRACKET		1
63	587 58 59-01	FLAP		1
64	587 91 33-01	HEXAGON NUT		4

PRODUCT COMPLETE

LC140 S, 967320101, 2016-01

Ref	Part No	Description	Remark	QTY KIT
65	587 58 58-01	KNOB		4
66	502 25 87-01	SPACER RING		2
67	502 25 99-01	BOLT		2
68	587 91 37-01	BOLT		3
69	587 91 11-01	GASKET		3
70	587 91 61-01	ENGINE		1
71	587 58 63-01	GRASSBAG		1
72	587 91 18-01	BRACKET		1
73	587 58 60-01	COVER		1
74	587 91 23-01	SCREW		1
75	587 58 61-01	HANDLE		1
76	502 27 58-01	HOOK		1
77	502 27 59-01	HANDLE		1
78	501 05 54-01	COVER		2
79	501 05 57-01	HOLDER		2
80	502 40 11-01	CABLE ASSY		1
81	502 40 18-01	CABLE		1
82	502 40 21-01	BOLT		2
83	502 40 54-01	TROLLEY		1
84	587 91 32-01	NUT		2
85	587 91 44-01	RING		2
86	502 40 56-01	BLOCK		1
87	587 91 40-01	BOLT		2
88	502 40 66-01	TROLLEY		1
89	502 40 67-01	COVER		1
90	502 42 94-01	HANDLE		1
91	587 99 35-01	WASHER		2
92	587 99 25-01	O-RING		4
93	501 05 56-01	PLATE		1
94	502 42 99-01	BOLT		2
95	502 43 42-01	SPRING WASHER		1
96	501 05 53-01	PLATE		1
97	501 05 52-01	ROD		1
98	501 05 55-01	PLATE		1
99	579 68 51-01	BOLT		2
100	579 68 52-01	NUT		2
101	579 68 79-01	NUT		4